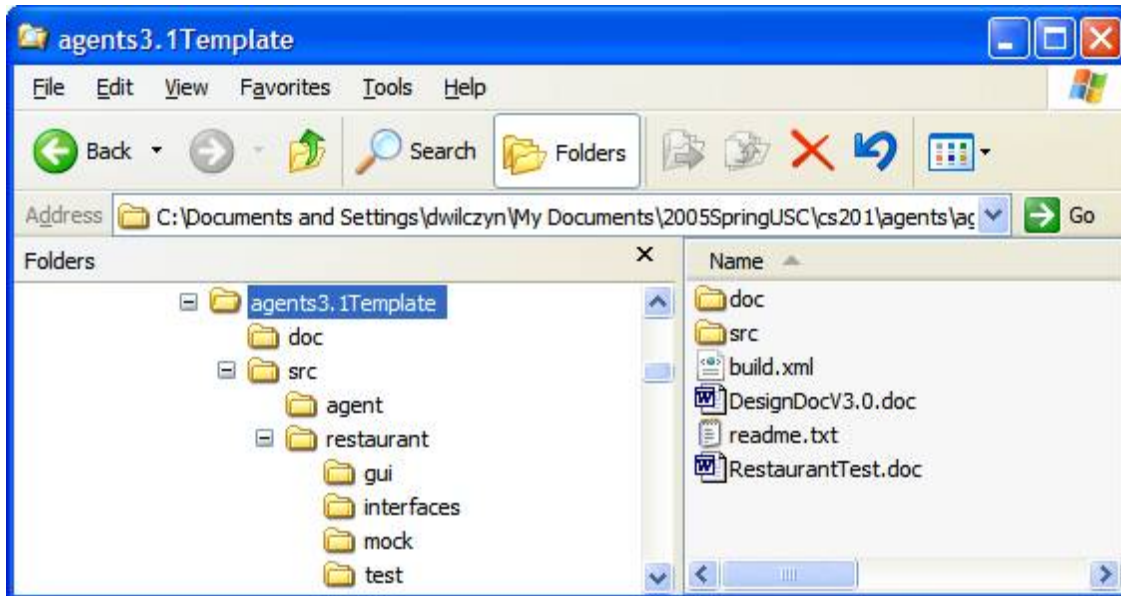


# Unit Testing Setup

The purpose of this lab is to prepare for unit testing. You will be unit testing your v4.2 Cashier agent. There are a lot of things to do in preparation. Examples we give will assume that you will be modifying your v4.2 work in preparation for v4.3. Copy your whole v4.2 to something else like v4.3. Then follow these directions.

## Directory Structure



The picture (from an old set of instructions) shows a mock directory at the same level with gui, interfaces, and test. Instead, make the mock directory a subdirectory of test.

From now on, only use these instructions.

## Interfaces

In the interface directory are the interfaces for your restaurant players. A sample is given below for the cook.

## Changing Agent Names:

For each agent, do global replace across files in restaurant directory  
XyzAgent ---> Xyz

For example, a line of code like: `public void ImHungry(CustomerAgent c) {...}`  
must be changed to: `public void ImHungry(Customer c) {...}`

Question: Why do they do this?

Answer: So that this code works for both a MockCustomer or a CustomerAgent.

Also each XyzAgent class signature must change. Here is a sample::

```
package restaurant;

import restaurant.interfaces.*;
import agent.Agent;
import java.util.*;
public class WaiterAgent extends Agent implements Waiter{
    ...
}
```

## Setting Up Unit Tests

We will supply you with:

EventLog.java - For capturing event strings to be tested.

LoggedEvent.java - The class of for events in the event log.

MockAgent.java - A base class for Mock Agents.

MockCook.java - A sample of a v3.0 mock cook.

Cook.java - Shows an interface for the cook.

WaiterAgentTestsWithOneCustomer.java - A sample of a v3.0 set of waiter unit tests.

WaiterAgentTestsWithTwoCustomers.java - A sample of a v3.0 set of waiter unit tests

UnitTest.zip has all this code.

The first four files go into the mock directory.

The Cook.java would go into the interfaces directory

The tests go in the test directory.

All of this code is at:

<http://www-scf.usc.edu/~csci201/agents/UnitTesting/>