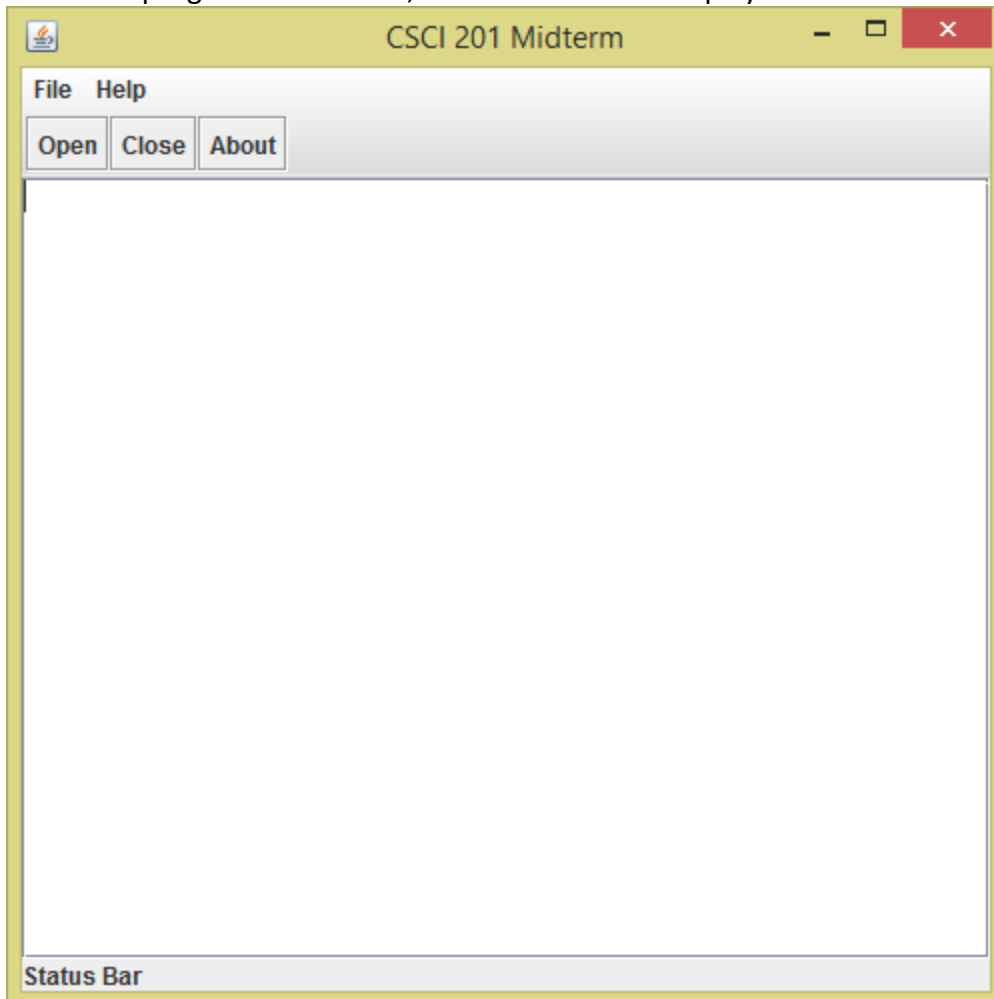


CSCI 201L Midterm - Programming
Summer 2014
13% of course grade

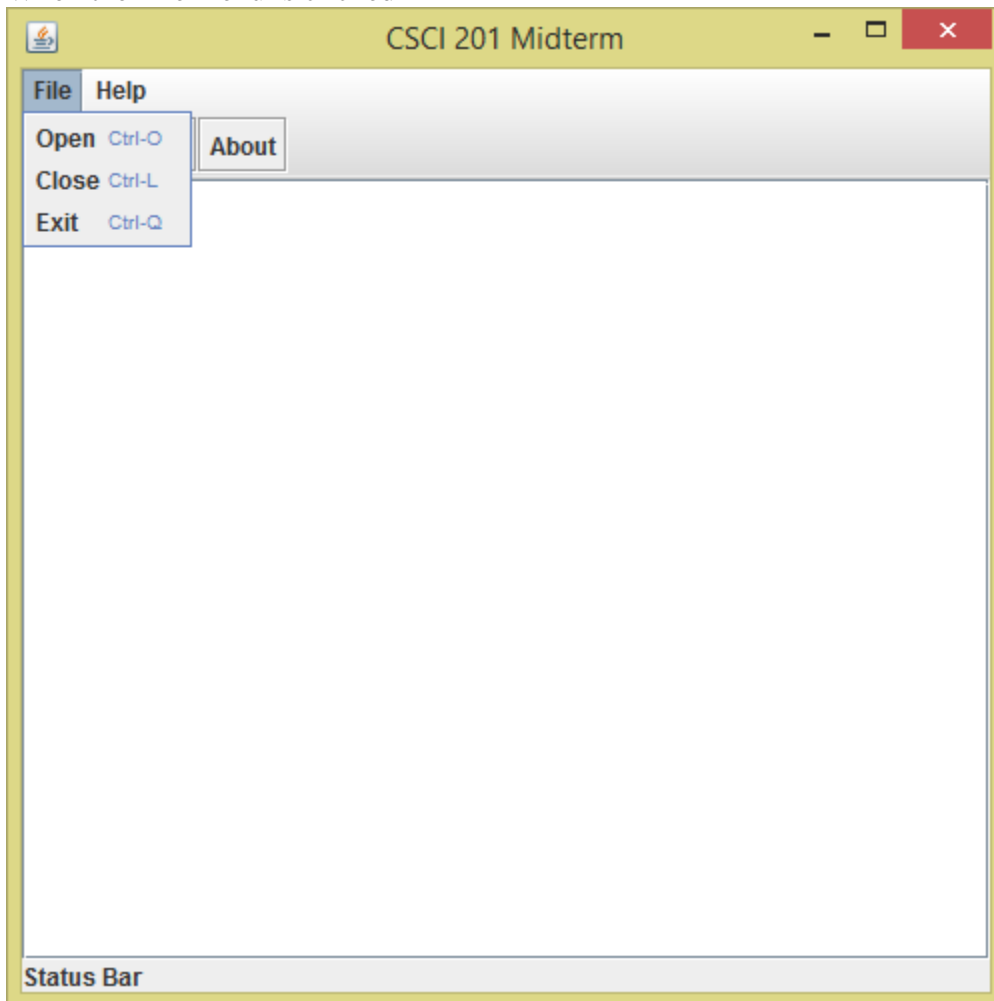
Create a program that behaves as a basic word processor. Your program will be able to open files, close files, exit, and display an about dialog box. There will be menus for all of these actions at the top and a tool bar for opening, closing, and displaying the about dialog box. There is also a status bar at the bottom that needs to be updated based on the action being performed. Below is a sample execution, and the grading criteria follows. Make sure you look at the grading criteria to ensure you have met all of the requirements of the exam.

Sample Execution

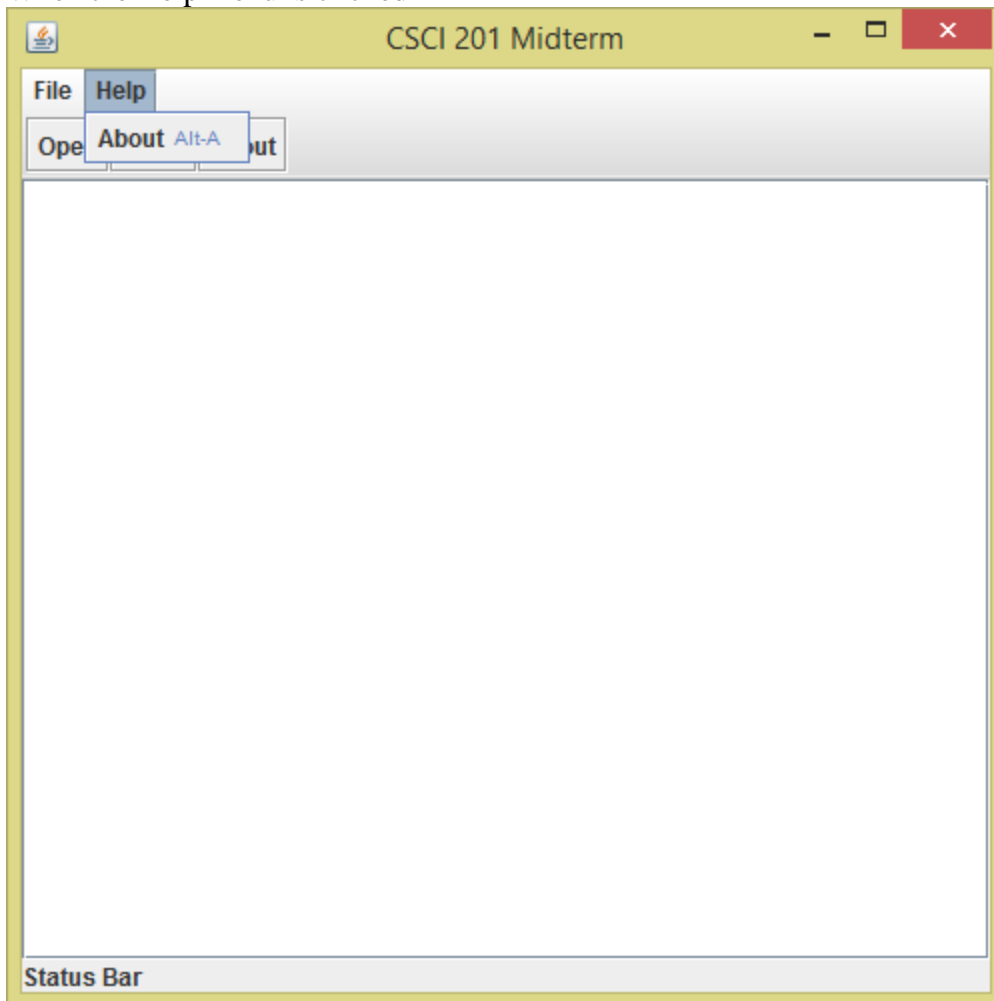
When the program is executed, this GUI should be displayed.



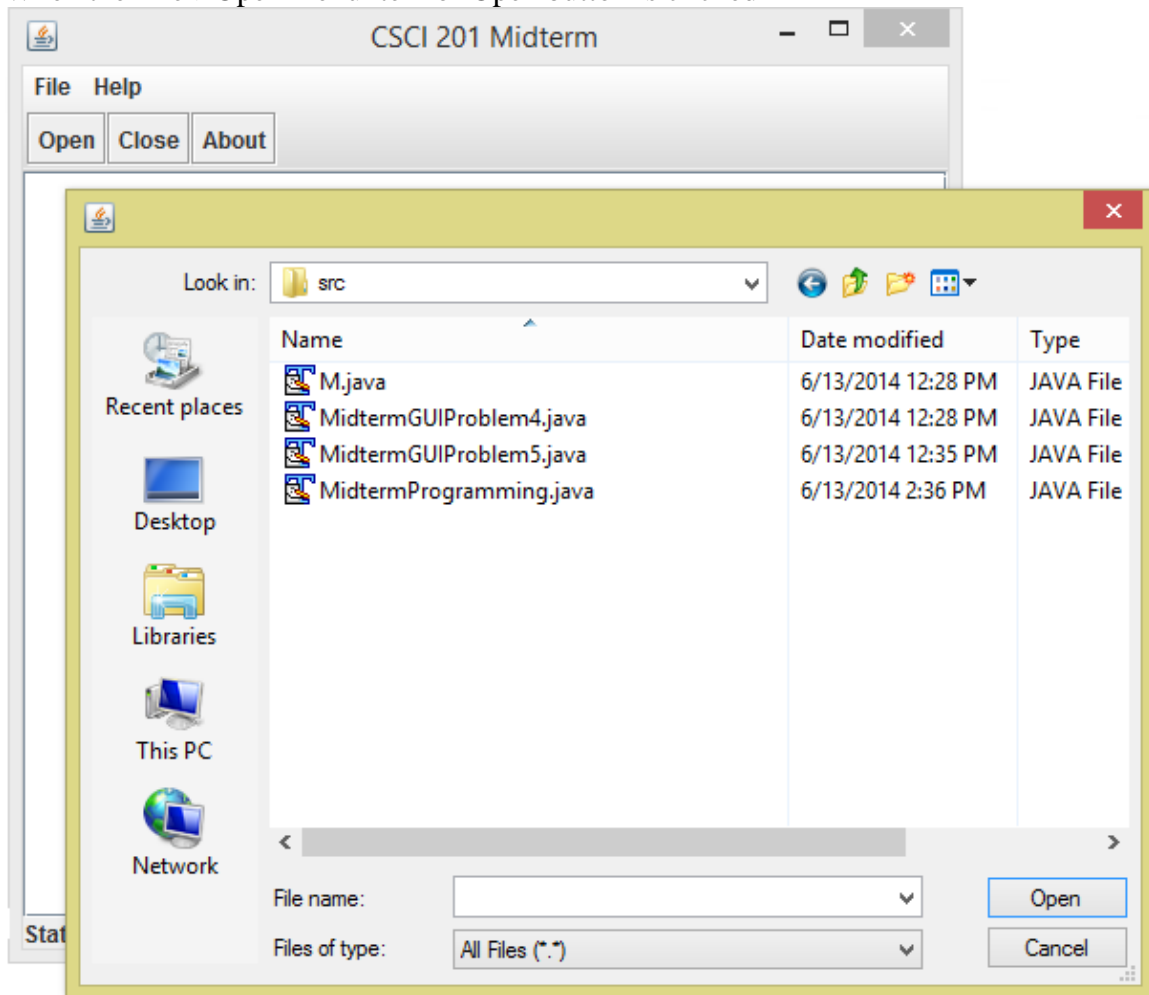
When the File menu is clicked



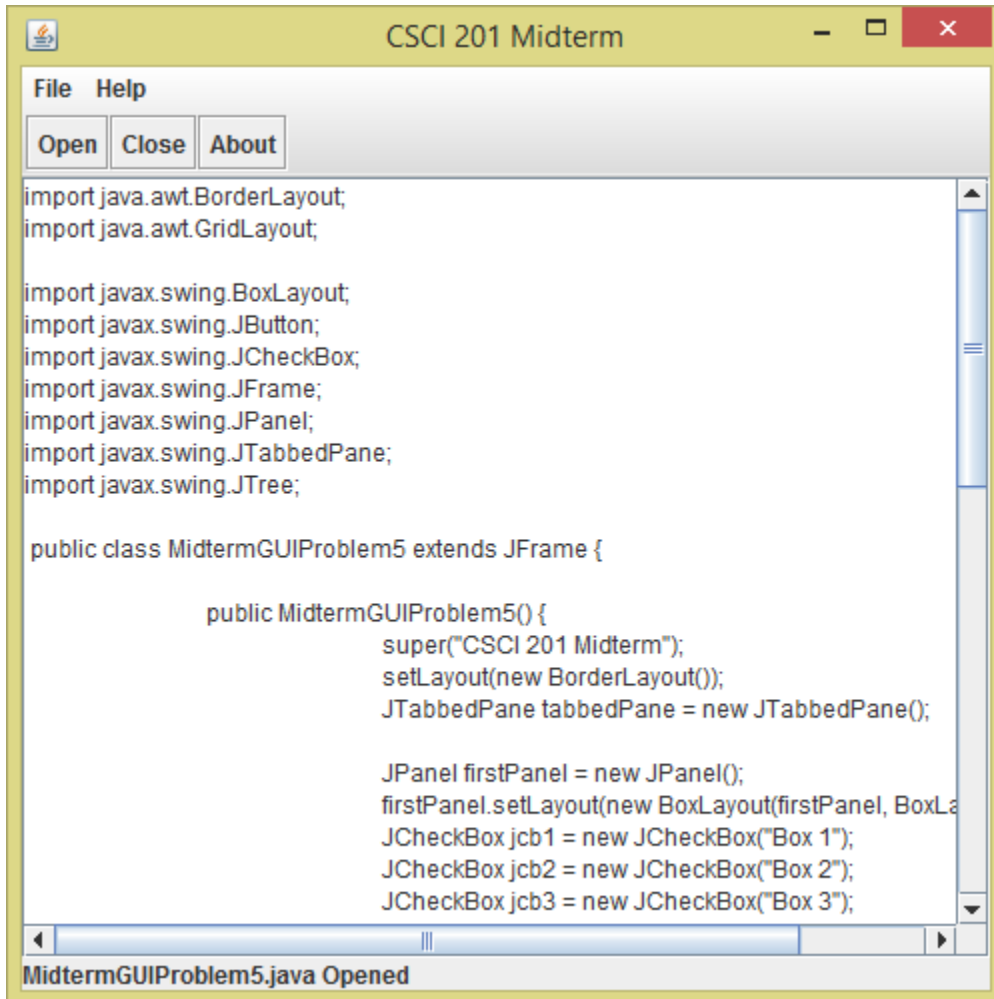
When the Help menu is clicked



When the File->Open menu item or Open button is clicked



When a file is selected



```
File Help
Open Close About

import java.awt.BorderLayout;
import java.awt.GridLayout;

import javax.swing.BoxLayout;
import javax.swing.JButton;
import javax.swing.JCheckBox;
import javax.swing.JFrame;
import javax.swing.JPanel;
import javax.swing.JTabbedPane;
import javax.swing.JTree;

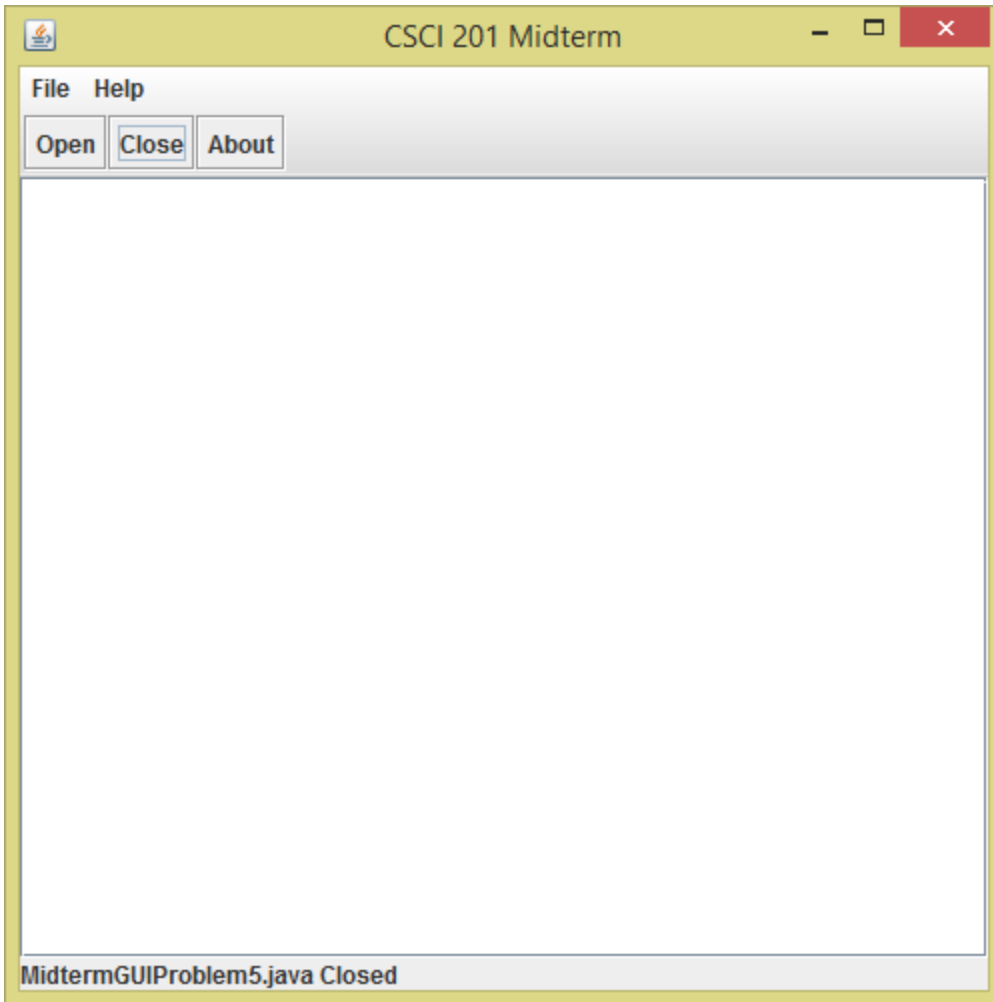
public class MidtermGUIProblem5 extends JFrame {

    public MidtermGUIProblem5() {
        super("CSCI 201 Midterm");
        setLayout(new BorderLayout());
        JTabbedPane tabbedPane = new JTabbedPane();

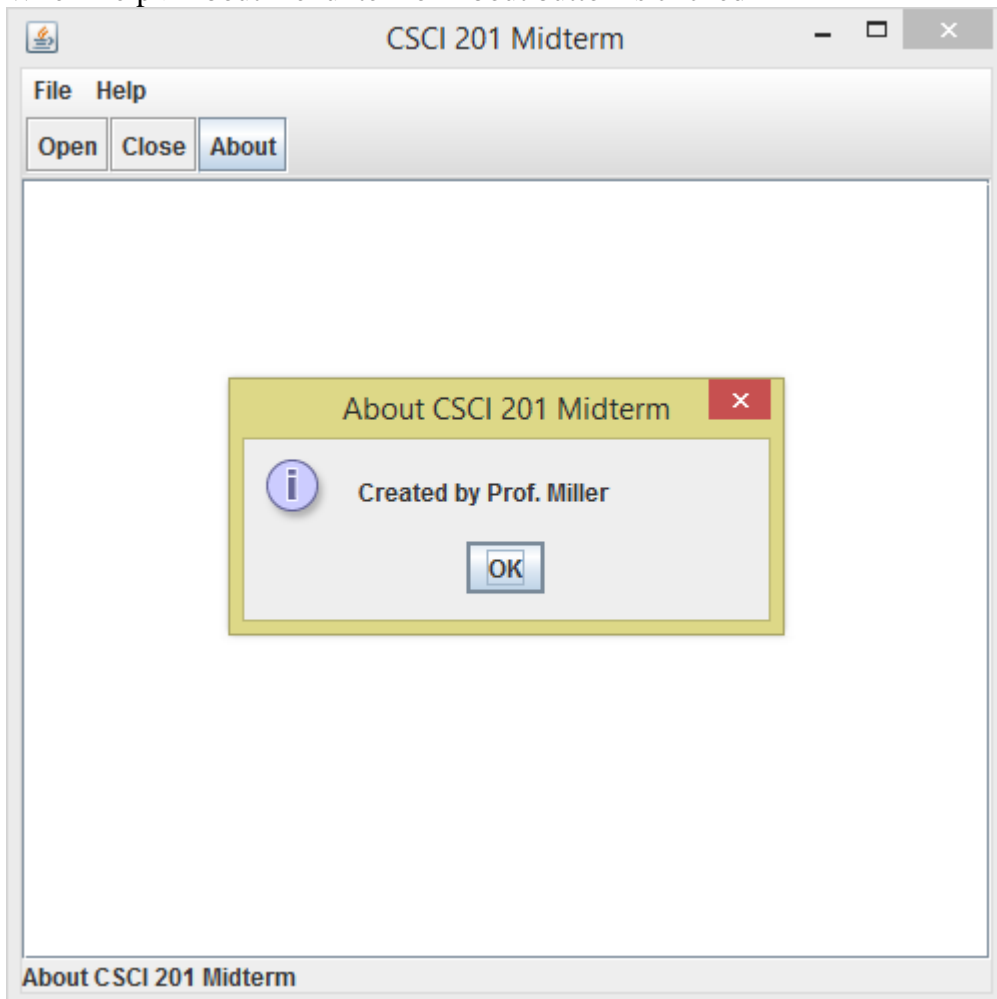
        JPanel firstPanel = new JPanel();
        firstPanel.setLayout(new BoxLayout(firstPanel, BoxLa
        JCheckBox jcb1 = new JCheckBox("Box 1");
        JCheckBox jcb2 = new JCheckBox("Box 2");
        JCheckBox jcb3 = new JCheckBox("Box 3");

MidtermGUIProblem5.java Opened
```

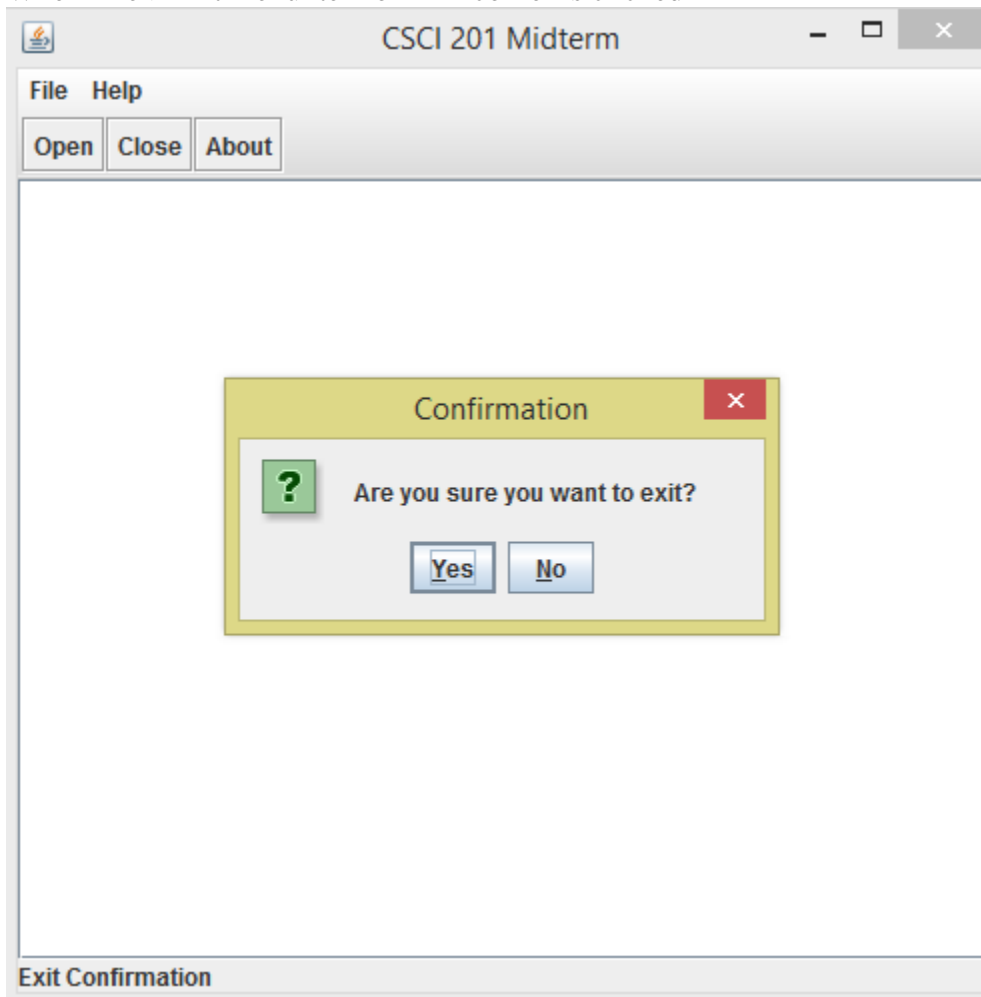
When the File->Close menu item or Close button is clicked



When Help->About menu item or About button is clicked



When File->Exit menu item or X in corner is clicked



Grading Criteria

| % of Final Grade | Criteria |
|-------------------------|--|
| 1.0% | GUI looks the same as shown when program is executed 0.3% Menu bar with File and Help menus 0.3% Button panel with Open, Close, and About buttons 0.2% Text area as shown 0.2% Status bar as shown |
| 1.0% | Menu bar contains the menu items as shown 0.25% File->Open 0.25% File->Close 0.25% File->Exit 0.25% Help->About |
| 1.0% | All menu items have accelerators as shown 0.25% File->Open with Ctrl-O 0.25% File->Close with Ctrl-L 0.25% File->Exit with Ctrl-Q 0.25% Help->About with Alt-A |
| 1.0% | All menu items and buttons share action listeners |
| 1.0% | Action listener for Open displays a file dialog 0.5% File->Open displays file dialog 0.5% Open button displays file dialog |
| 1.0% | Action listener for Close clears the text area 0.5% File->Close closes the currently open file 0.5% Close button closes the currently open file |
| 1.0% | Action listener for Exit displays a confirmation dialog box 0.5% File->Exit displays a confirmation dialog box 0.5% The X button displays a confirmation dialog box |
| 1.0% | Action listener for About displays a dialog box 0.5% Help->About displays a dialog box as shown 0.5% About button displays a dialog box as shown |
| 1.0% | File selected in file dialog is displayed in the text area |
| 1.0% | Scroll bars appear in text area if text is too large to be displayed on the screen |
| 1.0% | Status bar updated based on actions as shown 0.2% Reads "Status Bar" by default 0.2% Reads "[Filename] Opened" when a file is opened 0.2% Reads "[Filename] Closed" when a file is closed 0.2% Reads "About CSCI 201 Midterm" when About is clicked 0.2% Reads "Exit Confirmation" when Exit is clicked |
| 1.0% | When the Exit dialog box is displayed, a "yes" causes the program to quit and a "no" does not |
| 1.0% | Good object-oriented programming is used 0.5% Variable names are appropriate 0.5% Code is readable and easy to follow |