

Welcome to the PDB, the single international repository for the processing and distribution of 3-D macromolecular structure data primarily determined experimentally by [X-ray crystallography](#) and [NMR](#).

- [DEPOSIT](#) Contribute structure data
- [STATUS](#) Find entries awaiting release
- [DOWNLOAD](#) Retrieve structure files (FTP)
- [LINKS](#) Browse related information
- [PREVIEW](#) Beta-test new features

Current Holdings

[13335 Structures](#)
[Last Update: 03-Oct-2000](#)
[PDB Statistics](#)

Search

CLICK HERE

Enter a PDB ID:

[SearchLite](#): simple keyword search
[SearchFields](#): advanced search

Search 3-D macromolecular structure data primarily determined experimentally by [X-ray crystallography and NMR](#)

Enter keywords known to relate to the biological macromolecules of interest and select the "Search" button or "Enter" on your keyboard

HIV-1 Reverse Transcriptase

Search

Search strings are case insensitive

A more advanced, customizable search can be performed using the [SearchFields](#) interface. Other PDB search interfaces and related databases are found [here](#).

Examples:

4hhb

Find all structures containing the term *4hhb*. This will include the structure with the PDB code and any other structures that reference that code.

idcode: 4hhb

Find the single structure with the PDB code 4hhb. IDCODE is an example of an [attribute](#).



[Help](#)



[PDB Home](#)



[Contact us](#)

Your query found **47** structures in the current PDB release and you have selected **0** structures so far. (There are currently **4** structures being processed or "on hold" [matching your query](#)!) You can select specific structures by clicking on the checkbox next to their id. If you do not select any structures, certain options will default to all structures. To examine an individual structure select the Explore link!

Pull down to select option:

◀ ◀ 1-20 ▶ ▶

1BQM Deposited: 17-Aug-1998 Exp. Method: X-ray Diffraction Resolution: 3.10 Å { [EXPLORE](#) }

Classification Nucleotidyltransferase

Compound Mol_Id: 1; Molecule: Reverse Transcriptase; Chain: A, B; Synonym: Hiv-1 Rt; Ec: 2.7.7.49; Engineered: Yes; Mutation: C280S

1BQN Deposited: 17-Aug-1998 Exp. Method: X-ray Diffraction Resolution: 3.30 Å { [EXPLORE](#) }

Classification Nucleotidyltransferase

Compound Mol_Id: 1; Molecule: Reverse Transcriptase; Chain: A, B; Synonym: Hiv-1 Rt; Ec: 2.7.7.49; Engineered: Yes; Mutation: Y188L, C280S

1COT Deposited: 19-Jul-1999 Exp. Method: X-ray Diffraction Resolution: 2.70 Å { [EXPLORE](#) }

Classification Transferase

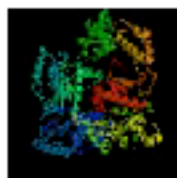
Compound Mol_Id: 1; Molecule: Hiv-1 Reverse Transcriptase (A-Chain); Chain: A; Fragment: P66; Ec: 2.7.7.49; Engineered: Yes
Mol_Id: 2; Molecule: Hiv-1 Reverse Transcriptase (B-Chain); Chain: B; Fragment: P51; Ec: 2.7.7.49; Engineered: Yes

1COU Deposited: 19-Jul-1999 Exp. Method: X-ray Diffraction Resolution: 2.52 Å { [EXPLORE](#) }

Classification Transferase

CLICK HERE





CLICK HERE

Summary Information



[Summary Information](#)

[View Structure](#)

[Download/Display File](#)

[Structural Neighbors](#)

[Geometry](#)

[Other Sources](#)

[Sequence Details](#)

[Structure Factors](#)
(compressed)

Explore

[SearchLite](#) [SearchFields](#)

Compound: **Mol_Id:** 1; **Molecule:** Hiv-1 Reverse Transcriptase (A-Chain); **Chain:** A;
Fragment: P66; **Ec:** 2.7.7.49; **Engineered:** Yes
Mol_Id: 2; **Molecule:** Hiv-1 Reverse Transcriptase (B-Chain); **Chain:** B;
Fragment: P51; **Ec:** 2.7.7.49; **Engineered:** Yes

Authors: J. Ren, R. M. Esnouf, A. L. Hopkins, D. I. Stuart, D. K. Stammers

Exp. Method: X-ray Diffraction

Classification: Transferase

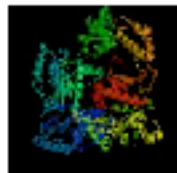
EC Number: 2.7.7.49

Source: Human Immunodeficiency Virus Type 1; Human Immunodeficiency Virus Type 1

Primary Citation: Ren, J., Esnouf, R. M., Hopkins, A. L., Stuart, D. I., Stammers, D. K.: Crystallographic Analysis of the Binding Modes of Thiazoloisoindolinone Non- Nucleoside Inhibitors to HIV-1 Reverse Transcriptase and Comparison with Modelling Studies *J.Med.Chem.* 42 pp. 3845 (1999) [[Medline](#)]

Deposition Date: 19-Jul-1999

Release Date: 19-Jul-2000



Classification **Transferase**
Compound **Mol_Id: 1; Molecule: Hiv-1 Reverse Transcriptase (A-Chain); Chain: A; Fragment: P66; Ec: 2.7.7.49; Engineered: Yes**
Mol_Id: 2; Molecule: Hiv-1 Reverse Transcriptase (B-Chain); Chain: B; Fragment: P51; Ec: 2.7.7.49; Engineered: Yes
Exp. Method **X-ray Diffraction**

⏪ 📄 ⏩
View Structure

⏪ 🔍 ? 🏠 ☰

- [Summary Information](#)
- [View Structure](#)
- [Download/Display File](#)
- [Structural Neighbors](#)
- [Geometry](#)
- [Other Sources](#)
- [Sequence Details](#)
- [Structure Factors \(compressed\)](#)

Interactive 3D Display:

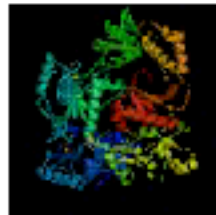
Choose from the following [display options](#):

- [VRML \(default options\)](#): Interactive immersive ribbon diagram
- [VRML \(custom options, full screen display\)](#): Interactive immersive ribbon or cylinder diagram with ligands
- [FirstGlance](#) (needs [Chime](#))
- [Protein Explorer](#) (needs [Chime](#))
- Java (simple interactive sequence/structure/property backbone diagram):

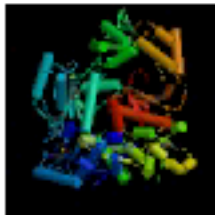
← CLICK HERE

QuickPDB

Still Images:



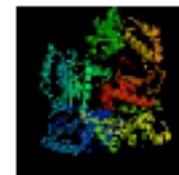
[Ribbons \(250x250\)](#)
[Ribbons \(500x500\)](#)



[Cylinders \(250x250\)](#)
[Cylinders \(500x500\)](#)

Explore

[SearchLite](#) [SearchFields](#)



Classification Transferase
Compound Mol_Id: 1; Molecule: Hiv-1 Reverse Transcriptase (A-Chain); Chain: A; Fragment: P66; Ec: 2.7.7.49; Engineered: Yes
Mol_Id: 2; Molecule: Hiv-1 Reverse Transcriptase (B-Chain); Chain: B; Fragment: PS1; Ec: 2.7.7.49; Engineered: Yes
Exp. Method X-ray Diffraction

Navigation icons: back, print, forward, home, search, help, refresh, menu.

View Structure

[Summary Information](#)

[View Structure](#)

[Download/Display File](#)

[Structural Neighbors](#)

[Geometry](#)

[Other Sources](#)

[Sequence Details](#)

[Structure Factors](#)

(compressed)

CHOOSE IMAGE TYPE HERE

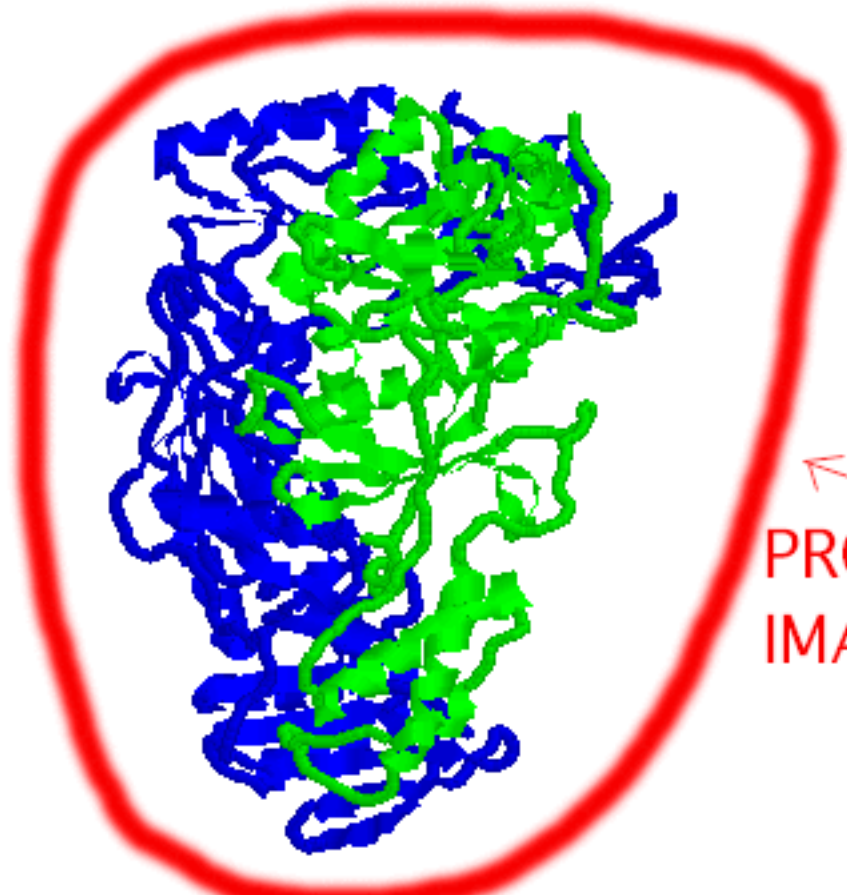
[Click atom to identify.](#)

- [Cartoon](#)
 - [Backbone](#)
 - [Protein](#)
 - [DNA/RNA](#)
 - [2° Structure](#)
 - [Termini](#)
- | | | |
|--|--|-------------------------------------|
| On | | Of |
| <input checked="" type="checkbox"/> Ligands | | <input checked="" type="checkbox"/> |
| <input checked="" type="checkbox"/> Water | | <input checked="" type="checkbox"/> |
| <input checked="" type="checkbox"/> Background | | <input checked="" type="checkbox"/> |
| <input checked="" type="checkbox"/> Spin | | <input checked="" type="checkbox"/> |
| <input checked="" type="checkbox"/> Zoom | | <input checked="" type="checkbox"/> |

[Chime Help](#)
This page by Eric Martz

Explore

[SearchLite](#) [SearchFields](#)



PROTEIN IMAGE